

RT10 and RT10G ROUGHNESS TESTERS

The essential and indispensable



USB connection



The RT10 and RT10G roughness testers are easy to handle and reliable, ideal for measuring details directly on the work islands or in machines production.

The RT10 is suitable for all those needs where it is only necessary to numerically characterize the roughness of the piece under examination, making verification extremely fast.

The RT10 Plus also has a plug-in connector that allows the interchangeability of the probe, ensuring the ability to measure on all surfaces simply by replacing it with the most suitable one.

The RT10G, on the other hand, is enhanced with a bright color display that makes it possible to view graphs as well as numerical results, directly on board. Both instruments are equipped with internal memory and long-lasting battery.



ST2 granite stand, dimensions 630x400 mm - code: 1.401

The ST2 diabase stand, with manual positioning column, allows the positioning of the roughness tester in a stable and permanent way, thus allowing the creation of a fixed control station. This system guarantees maximum measurement comfort, eliminates vibrations from the external environment and protects the instrument from possible bumps and accidental falls. It is possible to complete the equipment of the stand with the sliding micrometric table (code: 1.425), on which it is possible mounting the centering "V" or the vice (code: 3.403).



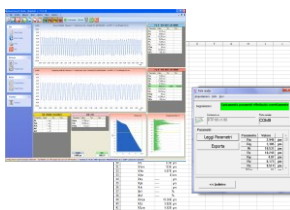
Rotable plug-in probe for 90° measurements as standard

Thanks to the mobile cross, it is possible to rotate the probe in a position perpendicular to the translation movement. This allows you to perform measurements in points that would be difficult to reach (only with SB50 probe, code 1.354). RT10 Plus and RT10G are also equipped with an interchangeable probe with plug-in connector, which offers the possibility of quickly replacing the probe in case of damage, for example, or if there are now more probes for different measurements, the operator can in fact easily change it according to the current measurement requirement.



Remote start button - code: 1.405

When the measurement area becomes difficult to reach, the instrument can be operated remotely. In fact, thanks to the remote measurement start button, the operator can comfortably start data acquisition without necessarily having to see the display or the instrument panel. There are also 100mm extensions available for the probe.



Software for roughness analysis and data export

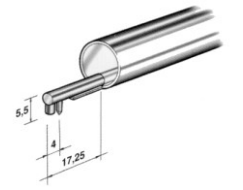
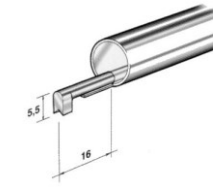
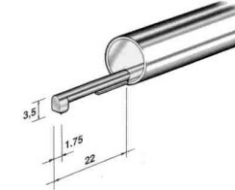
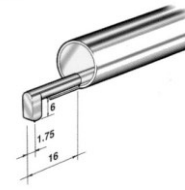
The analysis and sharing of measured data is not a problem thanks to the different software available. Virtual Printer allows you to download the single measurement or the memo on a PC and generate a print report, either in PDF or paper format (Software for downloading and printing data - code: 1.414). Measurement Studio, on the other hand, allows you to obtain the roughness analysis in a complete and professional way. Thanks to the integrated database, it is possible to generate the measurement codes for each detail, and the graphs and statistics are also displayed (Measurement Studio for roughness analysis - code: 1.404).

Probe SB20 - code: 1.351

Probe SB30 - code: 1.352

Probe SB40 - code: 1.353

Probe SB50 - code: 1.354

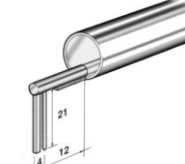
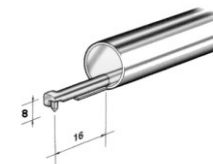


Probe SB110 - code: 1.358

Probe SB120 - code: 1.359

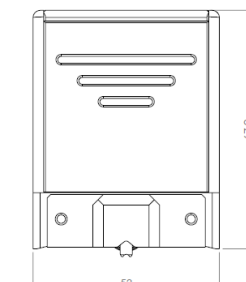
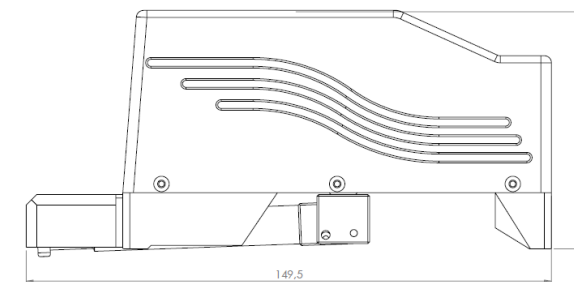
100mm Extension - code: 1.406

90° joint - code: 1.415



Technical data and dimensions

Product code:	RT10 / RT10 Plus (codes: 1.100 / 1.101)	RT10G (code: 1.102)
Measuring range:	±200µm	±300µm
Resolution:	0,001 µm	0,001 µm
Accuracy class:	1° ISO/DIN	1° ISO/DIN
Cut-off length:	0,25 - 0,8 - 2,5 mm	0,25 - 0,8 - 2,5 mm
Number of cut-offs:	Selectable from 1 to 5	Selectable from 1 to 5
Exploration ride:	Up to 16 mm	Up to 16 mm
Probe:	Inductive rotatable by 90° for lateral measurements	Inductive rotatable by 90° for lateral measurements
Measurement parameters:	11 parameters Ra, Rq, Rt, Rz, Rc, RSm, Rmr, Rmax, RPC- Pt, R, AR, Rx	31 parameters Ra, Rq, Rt, Rz, Rp, Rc, Rv, Rsm, Rdc, Pa, Pq, Pt, Pp, Pc, Pv, Psm, Pdc, RPC, Ppc - Rk, Rpk, Pvk, Mr1, Mr2 - Pt, R, Rx, AR, R3, R3zm, Rmax
Graphs displayed:	-	Roughness, primary profile, lift curve and distribution of tidy
Unit of measure:	Millimeters and inches	Millimeters and inches
Interface:	132x32 monochrome graphic LCD display and 4 waterproof membrane buttons	2-inch TFT color graphic display and 4 side waterproof membrane buttons
Languages:	Italian, French, English, German, Spanish and Portuguese	Italian, French, English, German, Spanish and Portuguese
Memory:	Up to 1000 mesures	Up to 1000 mesures
Standard equipment:	RT10 roughness tester, 110-230V battery charger, adjustment plates, 8mm diameter tail piece for mounting on the stand, roughness sample, transport case, user manual	RT10G roughness tester, 110-230V battery charger, adjustment plates, 8mm diameter tail piece for mounting on the stand, roughness sample, transport case, user manual



RTP80 ROUGHNESS TESTER

Linear and radial roughness

